



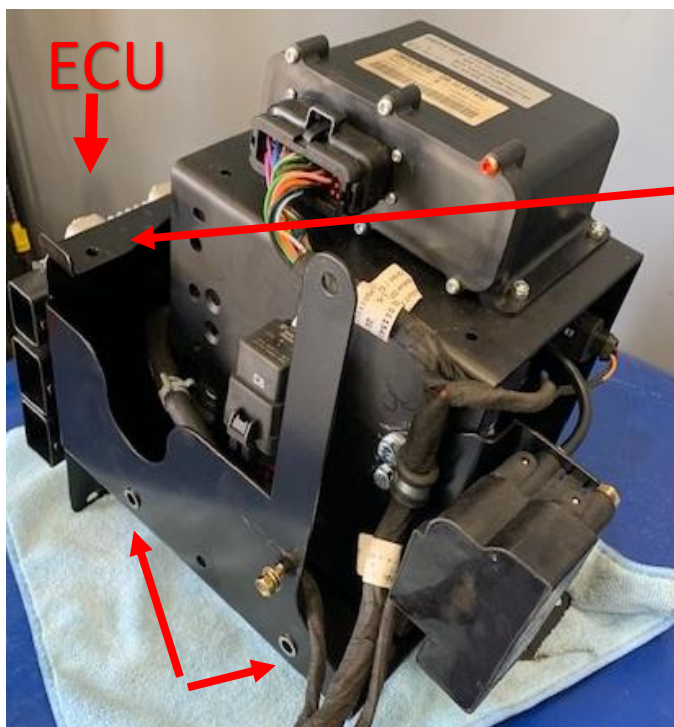
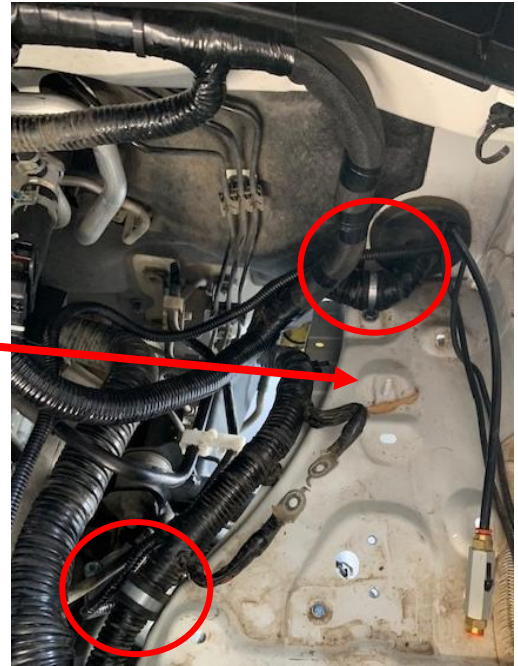
FITTING INSTRUCTIONS

FOR PATROLAPART Y62

Accessory Battery Compressor Tray

SKU: PAP-0229

1. Disconnect Battery
2. Remove airbox.
3. Unbolt bracketry holding ECU's and Fuse box and remove.
4. Re-route the main wiring harness to the engine side of the inner guard skirt.
5. Move the loom running to the front of the vehicle (under the airbox) to the engine side of the guard liner.
-Use the provided P Clips and existing bolts to hold the loom in place as illustrated.
6. If using tray for an Air Compressor, assemble the Compressor onto the battery tray now.
7. Locate the Stud for the accessory tray lower Mount- get the nut started- then leave it ready for the compressor bracket to slide under it. Re-use an existing nut for this stud.
8. Fit Large Engine ECU to back edge of Tray Loosely with M6x30 Flanged bolt and reuse original Nuts. Fit small bracket provided to top two bolts with fold pointing up as per below image.
9. Slide the compressor mount into place- get all the bolts started but leave loose, Use existing Bolts for securing the tray.
10. Ensure all wiring looms are secured and not rubbing on sharp edges. Plug the engine ECU in, ensure it has clearance all around by sliding on the bracket, then tighten bolts. Attach the earth wires to the threads in the side of the accessory tray ensuring they



Earth Nuts

11. have a good clean contact surface.
12. Once everything is routed correctly tighten all mounting bolts for the accessory bracket.
13. Fit the Smaller Engine ECU to the engine side of the bracket using the M6x20 Flanged bolts with Flanged Nut. Wiring Plug to point to front of vehicle.
14. Bolt the original fuse/Relay box to the provided small bracket using M6x20 Flanged bolt and Flanged Nut
15. Refit the airbox and re-connect the battery and any plugs or hoses disconnected in the engine bay.
16. You can now fit your battery, or finalise your compressor wiring, whatever you may be using this tray for.



Small ECU