



QUALITY ★
 PERFORMANCE ★
 VALUE ★

THE BRAND YOU TRUST FOR QUALITY AND VALUE ON ALL YOUR 4WD GEAR

PROUDLY DESIGNED AND MANUFACTURED IN AUSTRALIA

26 LIGHT CRESCENT
 MOUNT BARKER
 SA 5251

BOSS
 TOUGH ENOUGH!

BOSS4PCB

BOSS4WD.COM.AU

FITTING INSTRUCTIONS: **BOSS4PCB** Nissan Patrol GU & GQ Rear Coil Suspension Tower Support

BOSS4PCB Nissan Patrol Chassis Brace

Fits Nissan Patrol GU & GQ with Rear Coil Suspension
 Fits both Utility and Wagon Rear Suspension with Coils.

This brace fits all models above in order to prevent damage to the coil tower structure or chassis. Existing damage or deformation of the structure must be repaired before attempting to fit the brace. Slight bend issues can be resolved by fitting brace, installing hardware and tightening the hardware to pull the tower into line. See instructions

WARNING

Ensure the safety of all persons by adequately supporting the vehicle to prevent failure of any lifting device or equipment. All work should be performed by a suitably competent person.



WARNING: Failure to abide by the fitting instructions here-in will void product warranty and may cause the product to fail to perform its function correctly.

Ensure you read these instructions fully before proceeding, have the required tools and products at hand, and follow each step as instructed.

Maintain a safe working environment at all times.

Fitting Procedure

BEFORE YOU START IT IS IMPERATIVE THAT THE CAPTURED NUTS SECURING THE BUMP STOP ARE SOUND. IF SEIZED OR STRIPPED THIS MUST BE REPAIRED BEFORE FITTING THIS SUPPORT.

1. Raise the vehicle body via hoist or jacks, and ensure it is safely secured.
2. Support the vehicle with the rear suspension hanging down.
3. Remove the bump stops by carefully undoing the two securing bolts. These may be tight or rusted, apply spray lubricant where possible. If required, repair chassis captured nuts before you proceed. Use a 10mm x 1.25 pitch tap to restore the thread of the captured nut.

Continued Next Page...

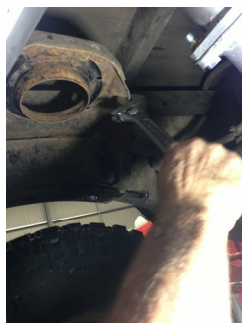


FITTING INSTRUCTIONS: **BOSS4PCB** Nissan Patrol GU & GQ Rear Coil Suspension Tower Support

3. Support the differential housing with a suitable jacking device as required.
4. Remove the rear springs by disconnecting the shock absorbers and sway bar links then lowering the differential on the jack. (Take care not to over stretch the brake line and diff breather)



5. Test fit the braces, as shown here;
6. If the towers are bent or cracked they must be repaired now, including chassis wall. Generally the towers can be bent into a position that they will accept the braces using a large shifting spanner. It is possible to pull the towers down a little using the fixing bolts and the brace. In some cases the chassis wall inside the tower may be bulged towards the centre of the car. This can be corrected by using a hammer to flatten the chassis wall. See photos below.



Continued Next Page...



QUALITY ★
PERFORMANCE ★
VALUE ★

THE BRAND YOU TRUST FOR QUALITY
 AND VALUE ON ALL YOUR 4WD GEAR

PROUDLY DESIGNED AND
 MANUFACTURED IN AUSTRALIA

26 LIGHT CRESCENT
 MOUNT BARKER
 SA 5251

BOSS
TOUGH ENOUGH!

BOSS4PCB

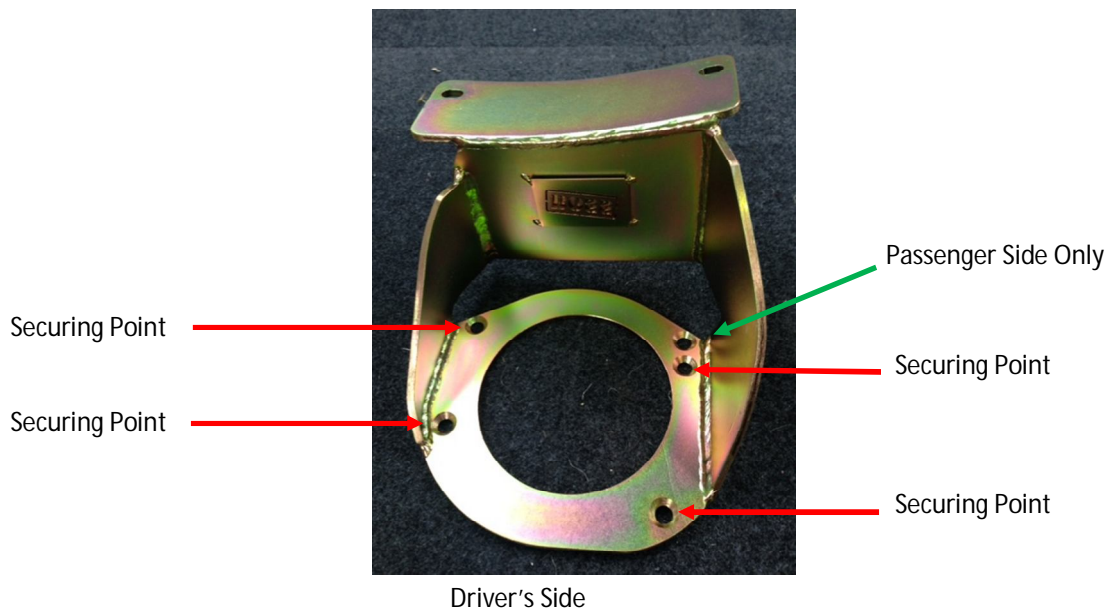
BOSS4WD.COM.AU

FITTING INSTRUCTIONS: BOSS4PCB Nissan Patrol GU & GQ Rear Coil Suspension Tower Support

- Clean in and around the coil tower and under the bump stop. (It is recommended to seal the gap between the chassis, tower and the brace with a suitable silicon product to prevent corrosion.)



- If all the bolts can be started, apply a coating of silicon sealant to the mating face of the brace and fit into the tower. Each brace is clearly labelled DS (Driver's Side) and PS (Passenger's Side).
- The Driver's Side brace uses four securing holes in the top plate as shown below;



Continued Next Page...



QUALITY ★
 PERFORMANCE ★
 VALUE ★

THE BRAND YOU TRUST FOR QUALITY AND VALUE ON ALL YOUR 4WD GEAR

PROUDLY DESIGNED AND MANUFACTURED IN AUSTRALIA

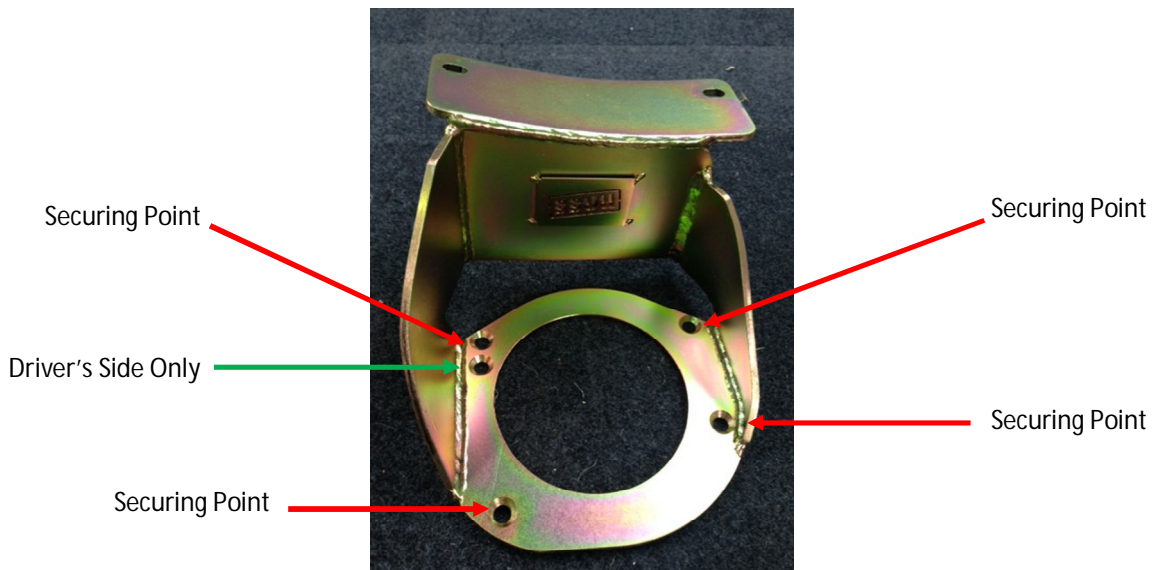
26 LIGHT CRESCENT
 MOUNT BARKER
 SA 5251

BOSS4PCB

BOSS4WD.COM.AU

FITTING INSTRUCTIONS: **BOSS4PCB** Nissan Patrol GU & GQ Rear Coil Suspension Tower Support

10. The Passenger's Side brace uses four securing holes in the top plate as shown below;



Passenger's Side

11. Fit all the supplied hex head counter sunk bolts and flange nuts in conjunction with recommended Loctite grade 243 at each securing point shown in above photos (at red arrows).
12. Fit the bump stop over the chassis brace top mounting plate with the supplied M10 x 1.25mm grade 8.8 high tensile bolts and supplied washers, applying the Loctite grade 243 along the thread length of each bolt and tighten the bolts gradually and evenly. Ensure each bolt is secured completely and tightened.
13. Fit the new coil insulator and refit the spring. Repeat this process for each side.
14. Raise the diff and refit the sway bar and shockers.
15. Ensure any other parts undone or loosened are re-secured. Carefully lower the vehicle to the ground. This task is complete.

Checklist Next Page...



QUALITY ★
PERFORMANCE ★
VALUE ★

THE BRAND YOU TRUST FOR QUALITY
AND VALUE ON ALL YOUR 4WD GEAR

PROUDLY DESIGNED AND
MANUFACTURED IN AUSTRALIA

26 LIGHT CRESCENT
MOUNT BARKER
SA 5251

BOSS

TOUGH ENOUGH !

BOSS4PCB

BOSS4WD.COM.AU

PACKAGING CHECKLIST: **BOSS4PCB** Nissan Patrol GU & GQ Rear Coil Suspension Tower Support

- 1 x Patrol Chassis Brace - Driver's Side
- 1 x Patrol Chassis Brace - Passenger's Side
- 2 x 5mm Polyurethane Coil Insulator
- 8 x M8x20 Counter Sunk Bolts
- 8 x M8 Flanged Nuts
- 4 x M10 x 42 (1.25) High Tensile Bolts
- 4 x M10 Flat Washers
- 4 x M10 Spring Washers
- 1 x Fitting Instructions, 5 pages

Packed By: _____

Inspected By: _____