



## **FITTING INSTRUCTIONS**

**MAKE:** *Toyota*

**MODEL:** *Prado 150 Series*

**TYPE:** *Wagon*

**YEARS OF MANUFACTURE:** *11/2009 Onward.*

**PART NUMBER:** *CBTP10*

**POSITION:** *Behind the 2<sup>nd</sup> row of seats.*

**KIT:** *2- Grab Handle Brackets (165)*

*2- 175mm Sharp Offset Brackets*

*2- 215mm long 32mmx5mm Brackets*

*4- M6x25mm Set Screws*

*4- M6x20mm Washers*

*4- M10x20mm Set Screws*

*2- M10x50mm Bolt*

*6- M10 Whiz Nuts*

*2- M10 Mudguard Washers*

*2- 25mm Spacers*

**Fold the 3<sup>rd</sup> row of seats down.**

**PLACE THE CARGO BARRIER IN THE VEHICLE WITH THE MESH TO THE REAR OF THE VEHICLE.**

**CARGO BARRIER SITS ON THE FOLDED 3<sup>RD</sup> ROW OF SEATS.**

**ALLWAYS CHECK FOR FUEL LINES ETC BEFORE DRILLING AND ALWAYS USE A DRILL STOP.**

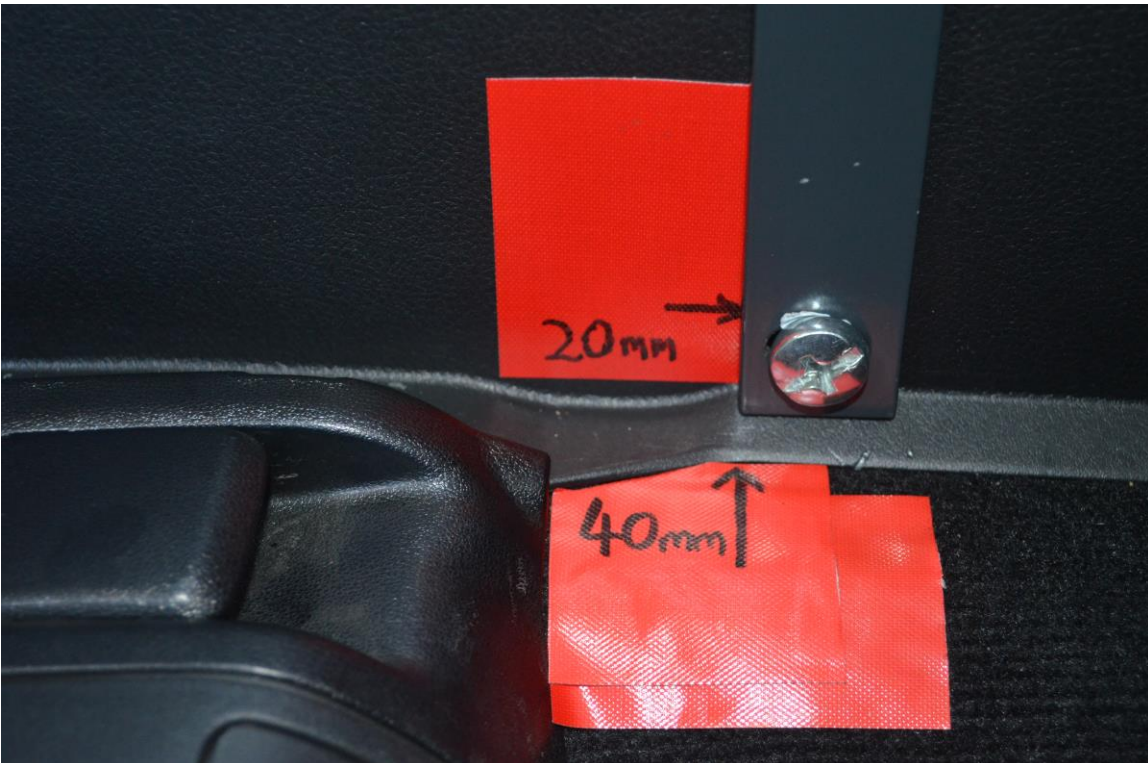
**TOP:** Remove the two rear grab handles and replace with the grab handle brackets supplied, secure using M6x25mm set screws and M6x20mm washers. Secure one end of the 175mm offset brackets to the M10 thread protruding out of the grab handle bracket using an M10 whiz nut. Secure the other end of the 175mm offset bracket to the top tag on the Cargo Barrier using an M10x20mm set screw and an M10 whiz nut.



**BASE:**

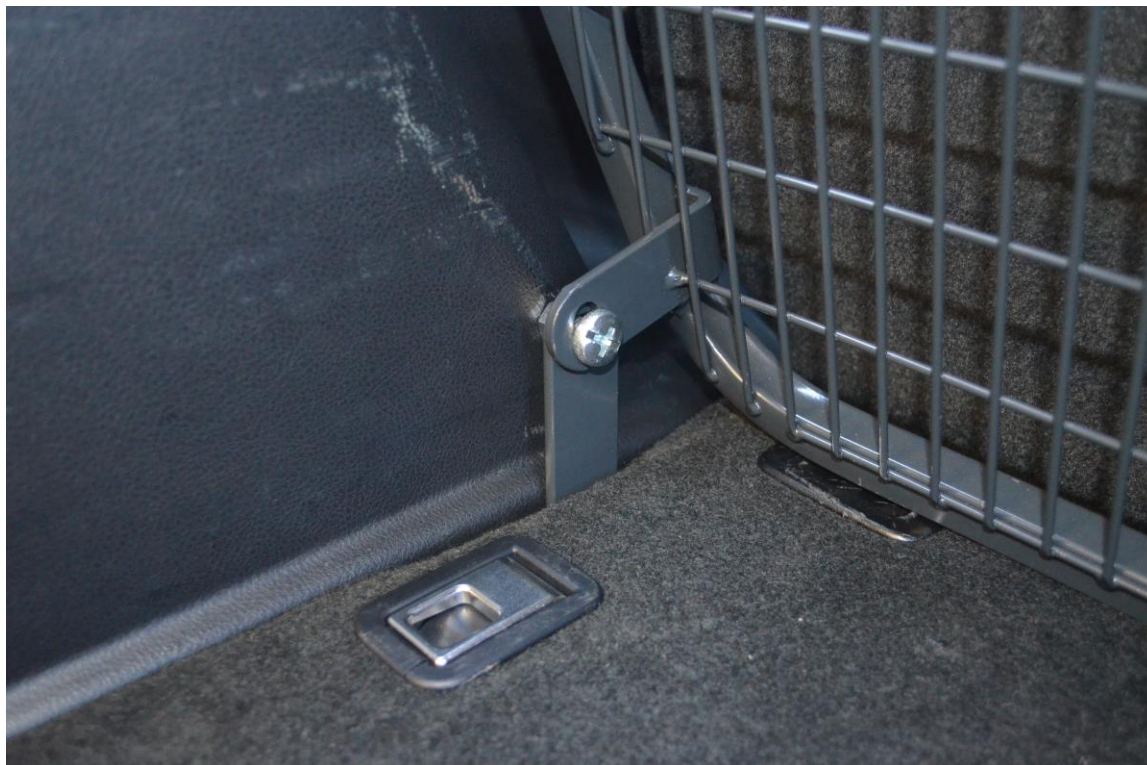
**Fold the rear row of seats up while installing the base mounts.**

Measure forward 40mm and up 20mm from the base of the seat. (see picture below)



Hold the bracket in place (the flat edge of the bracket should be resting on the plastic).  
Mark where the hole is and drill this out right through to the wheel arch with a small pilot drill and then drill the trim to 18mm to accept 17mm wide by 25mm long spacer.  
Drill an 11mm hole through the wheel arch.  
Then attach the bracket to the vehicle using an M10x50mm set screw and an 25mm long spacer tube on the other side of the bracket.  
On the wheel arch side fix with an M10 mudguard washer and tighten.

Now fold the seats down so you can see the top of the 215mm bracket. Attach the cargo barrier to this using an M10x20mm set screw and an M10 wizz nut.





**CHECK OVER FIXINGS SYSTEMATICALLY TO MAKE SURE THEY ARE ALL TIGHT AND STABLE.**